

Beaded Pendant and Earring Set

© 2014 Jennifer Williams

The Pendant

Materials and equipment:

Size 20 thread, 28 size 11 seed beads, 1 crystal drop bead, a jewellery finding bail, size 0.75 and 0.4 crochet hooks and the usual tatting equipment.

A 'Big Eyed Needle' would be useful for stringing the beads.

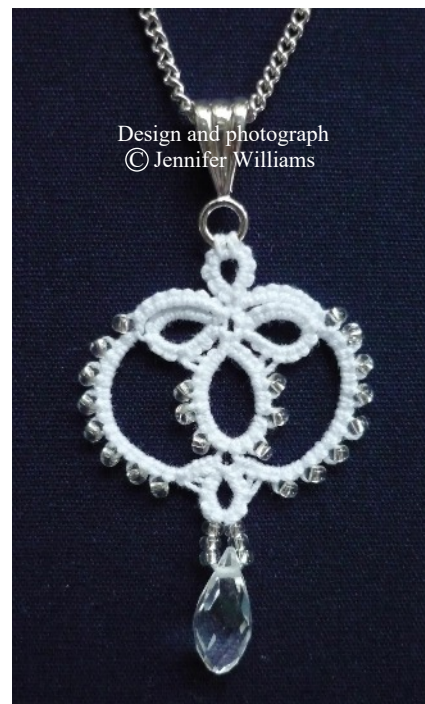
Abbreviations:

R. = ring, + = join, cl = close ring, RW = reverse work,

CH. = chain, vsp = very small picot, p = picot,

B = bead, SLT = shoe lace trick, sj = shuttle join,

LBP = long beaded picot



Design and photograph
© Jennifer Williams

String 11 size 11 beads, the crystal drop bead, then 17 size 11 beads

Wind approximately 1 1/2 metres on the shuttle - with 6 beads

NB on the 'ball' thread you should have 11 size 11 beads, 1 crystal bead then another 11 size 11 beads.

- R.A 4, + to the bail, 1, + to the bail again, 4, cl, RW
 CH. 1, RW
 R.B 7, vsp, 4, p, 3, cl, RW
 CH. 1, RW
 R.C Bring 6 beads (from the shuttle) into the ring round your hand
 3, + to ring 'B', 2, (B, 2) x 3, p, 2, (B, 2) x 3, p, 3, cl, RW
 CH. 1, RW
 R.D 3, + to ring 'C', 4, vsp, 7, cl, RW
 CH. 1, - Fig 1

Do not cut.

Fig 1

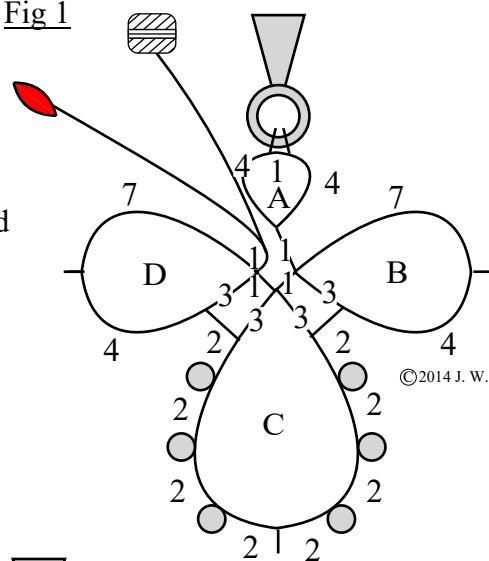
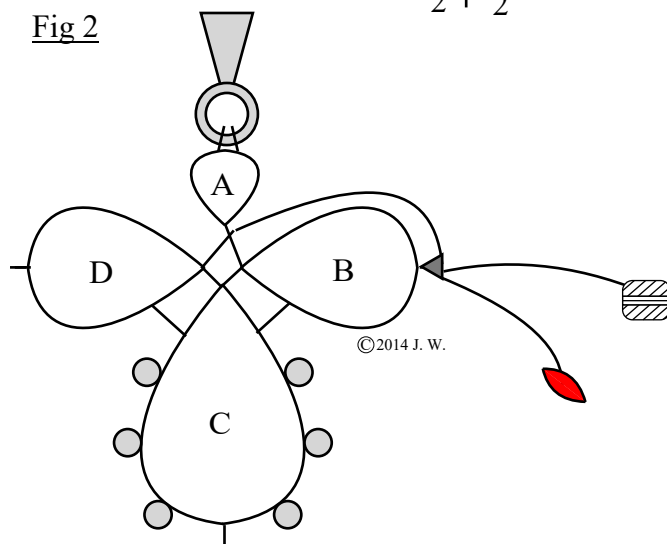


Fig 2



Encapsulate the threads between ring 'A' and the chain by taking the shuttle thread and the 'ball' thread on either side of it, work a SLT and turn your work so that it is in the right position to work the chain outside ring 'B' (see Fig 2)

- CH. 7, sj to vsp on ring 'B'

- CH. (B, 2) x 8, p, 2, tension the chain to curve as in the picture on the front of the pattern and Fig 3
sj to the picot on ring 'C'
- MR.E NB: 'MR. E' is a mock ring which is worked like a chain
chain 2, + to picot on previous chain, 3, LBP (with 3 seed beads, the crystal drop bead and
3 more seed beads), 3, p, 2, tension so that the chain curves into a circle
sj to the same picot on ring 'C', (Fig 4)
- CH. 2, + to the picot on the mock ring 'E', 2, (B, 2) x 7, tension the chain to curve as in the picture on
the front of the pattern and Fig 5, sj to the vsp on ring 'D', B, 7,

Cut and tie to the base of ring 'A'.(Fig 6)
Secure the ends, block and stiffen as required.

Fig 3

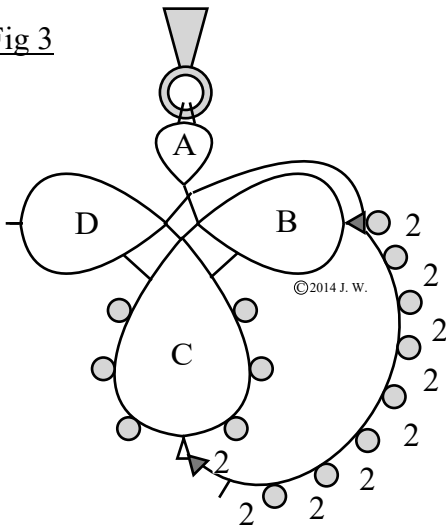


Fig 4

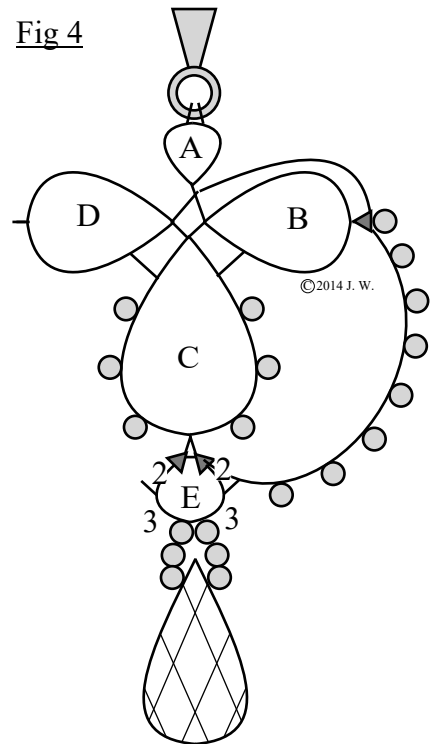
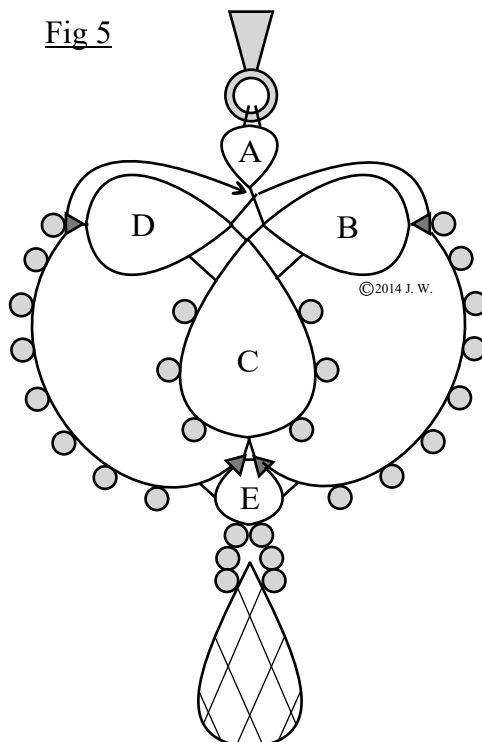


Fig 5

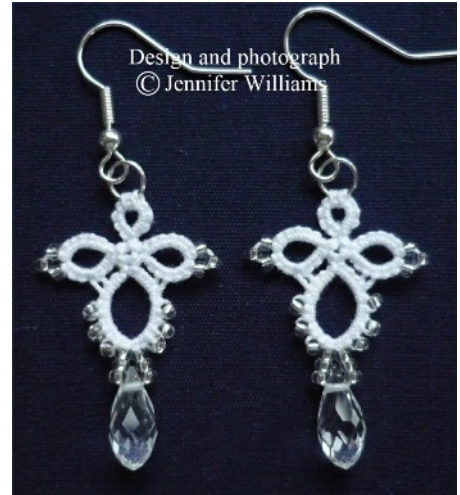


Earrings

Materials and equipment:

Size 20 thread, 36 size 11 seed beads, 2 crystal drop beads, jewellery finding split rings and earring hooks, and the usual tating equipment.

A 'Big Eyed Needle' would be useful for stringing the beads.



Abbreviations:

R. = ring, + = join, cl = close ring, RW = reverse work,

CH. = chain, vsp = very small picot, p = picot,

B = bead, LBP = long beaded picot

Earring - make 2

String 9 size 11 beads, one of the crystal beads then another 9 size 11 beads, then wind about a metre on your shuttle - with the beads. Do not cut.

R.A 4, + to the jewellery finding split ring, 1, + to the split ring again, 4, cl, RW

CH. 1, RW

R.B Bring 3 beads into the ring round your hand then work the ring:

7, 3B, 4, p, 3, cl, RW

CH. 1, RW

R.C Bring 6 beads, the crystal bead and another 6 beads into the ring round your hand then work the ring:
3, + to ring 'B', 2, B. 2, B, 2, B, 2, LBP (with 3 beads, the crystal bead and 3 beads), 2, B, 2, B, 2, B,
2, p, 3, cl, RW

CH. 1, RW

R.D Bring 3 beads into the ring round your hand then work the ring:

3, + to ring 'C', 4, 3B, 7, cl, RW

CH. 1

Cut and tie to the base of ring 'A' then secure the ends.

Make a second earring then block and stiffen as required.

Attach your tatted earrings to the earring hooks.

