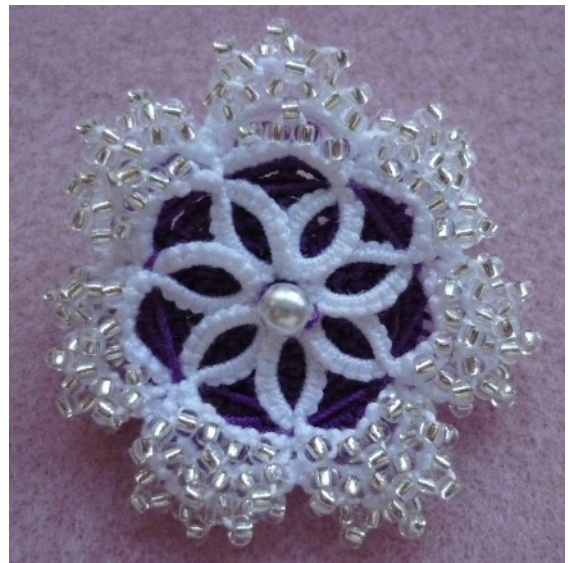


# Brooch/Pendant

©2014 Jennifer Williams

**Requirements:**

Size 20 thread, 175 size 11 beads for the 'petals' plus either one size 4 mm bead for the centre or about 20 size 11 beads in your choice of colour, a brooch pin or pin and the usual tatting equipment.



**Abbreviations:**

R. = ring, p = picot, cl = close ring, RW = reverse work, CH. = chain, B = bead, sj = shuttle join, To tension, push the stitches together or spread them out so that the chain is the stated length or curves as in the photo.

String the 175 beads then wind about 2 metres on your shuttle leaving the beads on the ball thread. Do not cut.

**Row 1** (Fig 1)

- R.A 8, large picot with an open measurement of ½ inch (13 mm), 8, cl, RW
- CH. 2, B, 2, 3B, 2, B, 2, tension, RW (Fig 1)
- \*R.B 8, + to the picot on ring 'A', 8, cl, RW
- CH. 2, B, 2, 3B, 2, B, 2, tension, RW\*\* (Fig 2)

Fig 1

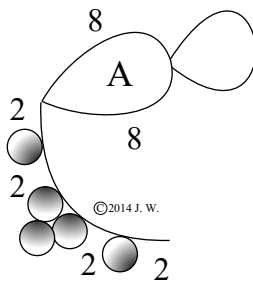


Fig 2

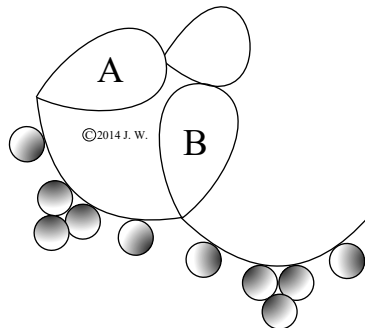
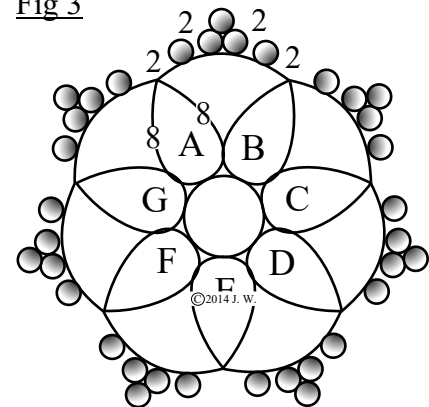
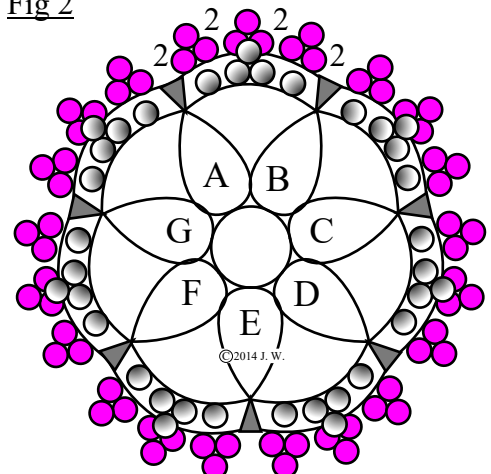


Fig 3



Repeat from \* to \*\* 5 more times  
Do not reverse work after the last repeat,  
work a sj into the base of ring 'A', (Fig 3)  
then continue on to row 2


Fig 2



**Row 2** (Fig 2 - beads are coloured in the diagram for clarity)

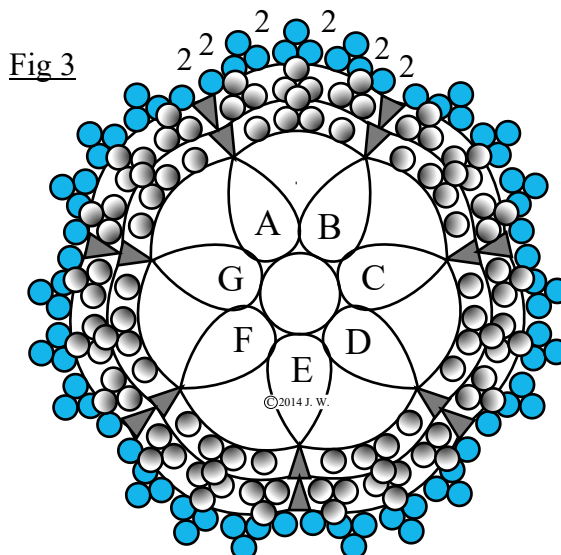
- CH. 2, 3B, 2, 3B, 2, 3B, 2, tension so that the chain sits behind the chain of row 1, sj in to the small space at the base of the adjacent ring on row 1.

Repeat this chain six more times to complete the row,  
then continue on to row 3

**Row 3** (fig 3 - beads are coloured  for clarity)

CH. 2, B, 2, 3B, 2, 3B, 2, 3B, 2, B, 2, tension so that this chain sits behind the chain of row 2, sj into the small space above the adjacent sj on row 2.

Repeat this chain six more times then cut and tie to the start of the row. Secure the ends.



### **Back of brooch - optional**

Wind about a metre on your shuttle. Do not cut.

SCMR. 1 (vsp, 1) x 6, cl, make a very small false picot by making a second half stitch before working the first chain of row 2

Do not reverse work, continue working consecutive rows of chains as follows:

NB - tension each chain so that it fits snugly outside the one on the row below

### **Row 2**

\*Chain 2, sj to the adjacent vsp on row 1, repeat from \* six more times working the last sj into the false picot.

### **Row 3**

Chain 3, sj into the small space above the sj on the previous row.

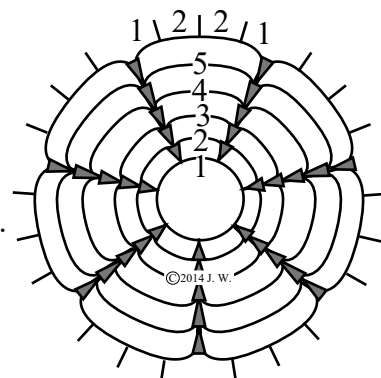
Repeat from the beginning of the row six more times

Work **rows 4 and 5** the same as row 3 but working each chain 4 double stitches and 5 double stitches respectively

### **Row 6**

Chain 1, p, 2, p, 2, p, 1, sj to the small space above the sj on the previous row.

Repeat this chain six more times omitting the sj after the last chain, then cut and tie to the start of the row and secure the ends.



### **To Assemble the Brooch**

Attach the back of the brooch to the brooch fastening or pin using the same colour thread as the brooch back.

If adding bunched beads to the centre - string about 20 beads on a suitable or matching colour thread. Tie the beads in groups of three, as close together as possible, then take the ends through the centre of the flower to the back and sew or tie in place.

If adding a single bead to the centre of the flower - thread a length of matching thread on a fine needle, insert the needle, from the back to the front of the brooch back, string the 4 mm bead then take the needle back through the flower and brooch back.

Tie, secure and hide the ends.

If you have attached your brooch to a brooch pin all the ends need to be hidden but this isn't important with the brooch sieve type pin as the metal back hides all the sewings and ends.