

Pearl tatted bracelet with beads



Requirements:

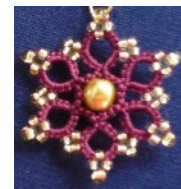
Size 20 thread, 3 different types or coloured shuttles, a bracelet fastening, size 9 or 11 beads, and the usual tating equipment,

Abbreviations:

B = bead, R. = Ring, cl = close ring, RW = reverse work, CH. = Chain

CTM = continuous thread method 

The Flower Embellishment



String the 48 size 9 or 11 beads and wind 1½ metres on your shuttle with all of the beads. Do not cut.

R.A Bring 11 beads (from the shuttle) into the ring round your hand.

4, 4B, 4, 3B and 1B from the shuttle (shown in red in Fig. 1), 4, 4B, 4, cl, RW

CH. 3, RW

*R.B Bring 7 beads into the ring round your hand.

4, + to the beaded picot on the previous ring so that there is 1 bead on the left of the join and three beads on the right of the join (see →), 4, 3B and 1B from the shuttle (shown in red in Fig. 2), 4, 4B, 4, cl, RW

CH. 3, (optional - work second half, first half), RW**

Fig. 1

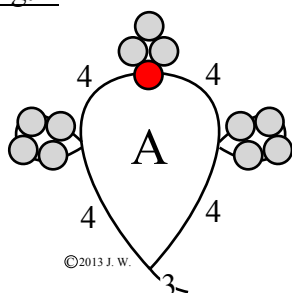
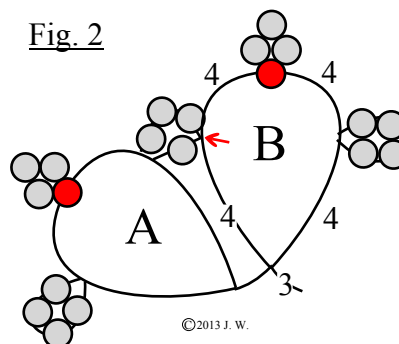


Fig. 2



Repeat from * to ** three more times then continue:-

Bring the auxiliary thread to the front of your work so that it will be in the right place to work the last chain.

R.F Bring 3 beads into the ring round your hand.

4, + to the beaded picot on the previous ring so that there is 1 bead on the left of the join and three beads on the right of the join, 4, 3B and 1B from the shuttle, 4, (check that the auxiliary thread is at the front of your work), + to the first beaded picot on ring 'A' so that there are 3 beads to the left of the join and 1 bead to the right of the join, 4, cl, (Fig. 3), RW

CH. 3,

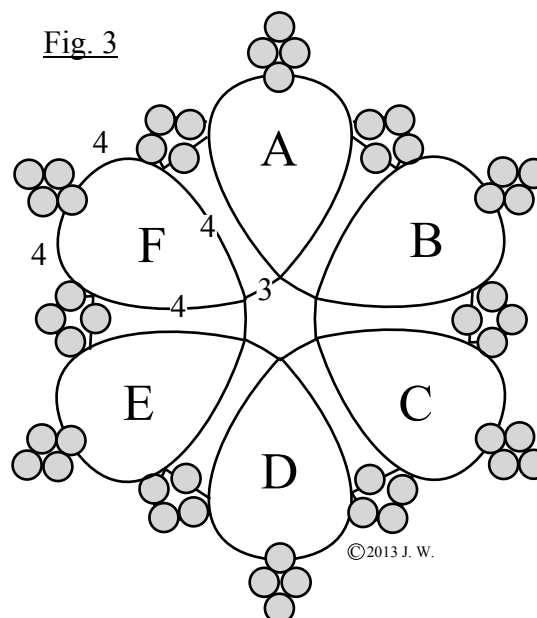
Cut leaving 12 inch (30 cm) ends.

Tie to the base of ring 'A' then thread one of the ends on a fine needle.

Take the needle through the size 4 mm bead then the base of ring 'D' and back through the bead again.

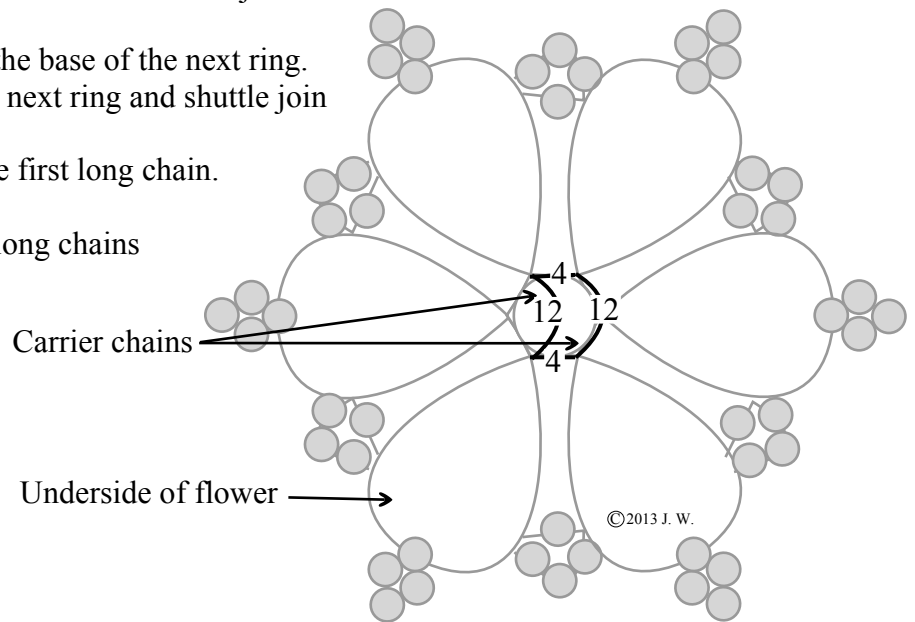
Tie the ends but do not cut.

Fig. 3



The carrier chains on the underside of the flower

Working on the underside of the flower, wind the shorter end back onto a shuttle.
 Chain 12 double stitches then tension to an arch deep enough to pass the bracelet through.
 Miss the adjacent ring on the flower and work a shuttle join to the base of the next ring.
 Chain 4, tension then shuttle join to the base of the next ring.
 Chain 12, tension as before, miss the next ring and shuttle join to the base of the following ring.
 Chain 4. Cut and tie to the start of the first long chain.
 Secure the ends.
 Thread the bracelet through the two long chains on the back of the flower



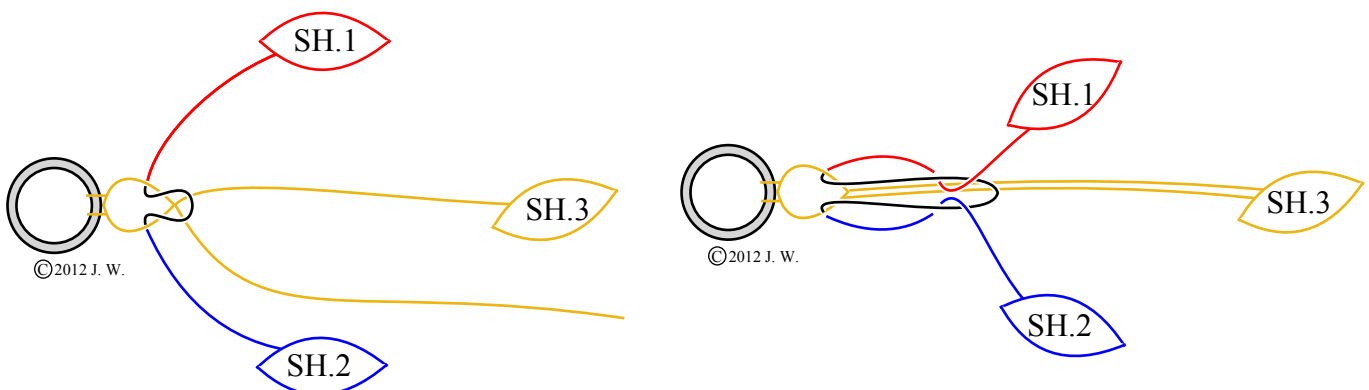
The Bracelet

Estimate the number of beads you will need (approximately 160) and string them. Wind two shuttles CTM with about 2 metres and half the beads on shuttle 1 and about 2 metres with the rest of the beads on shuttle 2. From the ball measure off about a metre and wind about half of it onto shuttle 3

SH.3 Ring: 4, + to one half of the bracelet fastening, 1, + to the bracelet fastening again, 4,cl

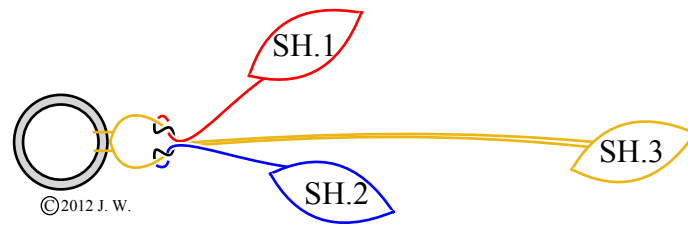


Make a loop in the thread between shuttles 1 and 2 and pull it through the ring you've just made. Pass shuttles 1 and 2 through this loop as in the diagrams below.



Adjust the threads and wind the cut thread on shuttle 3. There should be 2 threads on shuttle 3 and they will be the core of the pearl tatting.

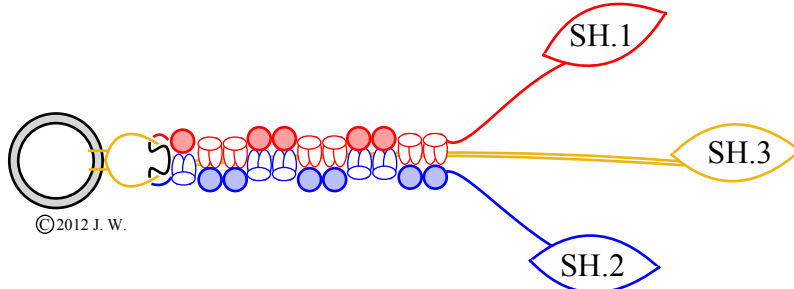
This diagram shows the threads adjusted and in place ready to pearl tat the bracelet.



The sample above is worked:

SH.2 1
 SH.1 B, 2
 *SH.2 2B, 2
 SH.1 2B, 2

Repeat from * for the length required. The sample measures 6 ¾ inches (17 cm) from the fastening



When the bracelet is the desired length unwind the cut thread from shuttle 3.

Tip: cut the threads from shuttles 1 and 2, tie them then hide them when working the final ring.

SH.3 Ring: 4, + to the other half of the bracelet fastening, 1, + to the bracelet fastening again, 4, cl
 Cut and tie then secure the ends.

Thread the bracelet through the two long chains on the back of the flower

